

# **IQView Interactive Document Camera E4521**

## **User Manual**



---

# Content

1.Attention to safety issues .....	1
1.1 Power .....	1
1.2 Clean up .....	1
1.3 Shake proof .....	1
1.4 Transportation .....	1
1.5 Others .....	1
2.Accessories list .....	2
3.Introduction .....	2
4.Interface .....	3
5.Device connection .....	3
6.Button Panel .....	4
7.Remote Control Panel .....	4
8.Output Resolution .....	5
9.FAQs .....	5
10.Mouse operation software .....	6

---

# 1.Attention to safety issues



## 1.1 Power

This product uses DC 12V power supply. You must notice the safety of electrical wire and electrical outlet, when there is any damaged please replace or repair it immediately.

## 1.2 Clean up

Please keep this presenter always clean. Keep this product away from water, oil, dust, caustic gas to allow this intelligent visual presenter work perfectly.

## 1.3 Shake proof

Prevent collision, nick or dropping .When you press any key and switch, you shouldn't overexert to allow this presenter work perfectly.

## 1.4 Transportation

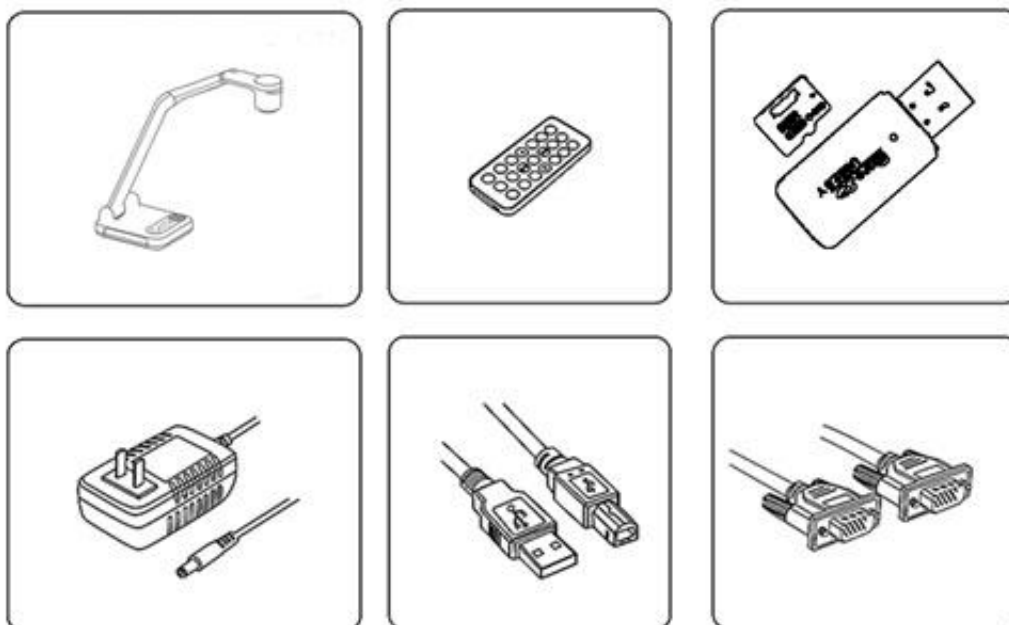
You can use any vehicle to transport the product under packed, but should avoid rain, snow and any huge bump.

## 1.5 Others

To extend the using time of this product ,please turn off the power supply after you have done your jobs.Non-professional person should not unwrap this machine,because it contains strong electricity. You must be responsibility for wrap this machine privately.Please use this machine under the guidance of this manual.

## 2. Accessories list

Name	Number
Machine	×1
Adapter	×1
HDMI cable	×1
VGA cable	×1
USB cable	×1
Remote control (no battery)	×1
TF Card (including software and user manual)	×1



## 3. Introduction

The visual presenter has 10x optical, 10 x digital (total 100x) zoom, file shooting range: A3, auto/manual focus, auto white balance, color adjustment etc. picture processing function, multi-way input and output ports so that can be connected with our media devices and switch the program.

Varies ways to control: interface, IR remote control, software.

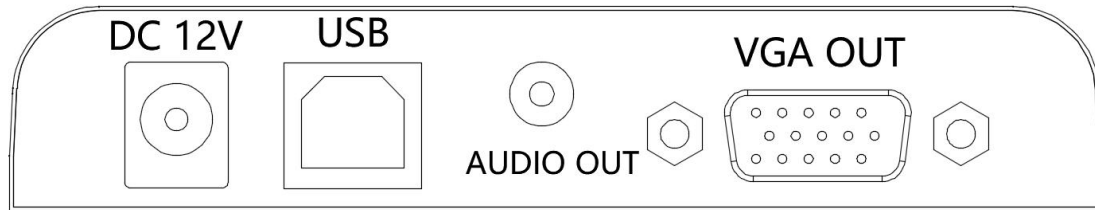
Built-in Linux operating system, Visual presenter through mouse operation can achieve video recording, taking photos, annotation, comparison with the screen, rotation, image freeze and other functions.

Support external computer access and switching, HDMI and VGA output, Supports 1920\*1080@60Hz, 1280\*1024@60Hz, and 1024\*768@60Hz resolution output; 4k type support 3840\*2160@30Hz (HDMI port), 1920\*1080@60Hz resolution output.

Built-in MIC and external audio, Support HD video recording, 4K type takes 8-megapixel photos and videos.

External power: safety, convenience and energy conservation.

## 4.Interface



**DC12V:** Power input, external power adapter

**USB:** Connect to USB port of computer (use of supporting software)

**AUDIO OUT:** Audio output

**VGA OUT:** VGA signal output, connected to display screen, projector and other display equipment



**VGA IN:** External VGA signal input, connected to computer host or laptop

**AUDIO IN:** Audio in

**VGA OUT:** VGA signal output, connected to display screen, projector and other display equipment

**HDMI OUT:** HDMI signal output, with HDMI interface HD display device

**TF:** TF card for storing videos or pictures

**USB MOUSE:** Connect the mouse for software operation

## 5.Device connection

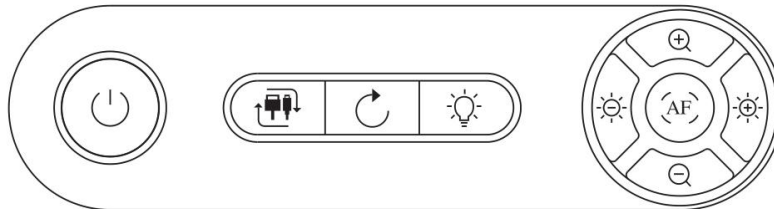
Connect the power adapter to the DC 12V power port. The visualizer indicator is red, and its in low-power standby state. For the device to work safely, be sure to use the power adapter provided by the manufacturer.

**VGA/HDMI port:** The monitor or projector device is connected to VGA / HDMIOUT in the visualizer with VGA/HDMI cable, external PC host or laptop is connected to the VGA/HDMI IN port.

**USP port:** Connect to USB port of computer via USB cable, If you use a desktop computer, the USB interface on the back of the computer will be more stable.

**Note:** HDMI and VGA output ports can be used simultaneously.

## 6.Button Panel



: Power Switch

: Source Switch

: Rotate the image 180 degrees

: Lighting

: Zoom In

: Zoom Out

: Bright+

: Bright-

## 7.Remote Control Panel

**Power:** Turn on / off the visual presenter

**Lamp:** Turn on / off the lamp of the presenter

**Source:** Camera / VGA1 / VGA2 / HDMI

**Resol:** Resol (Switch) / XGA (1024\*768) / 1080P (1920\*1080) / 4K

**Replay:** Mouse operation **Exit:** Exit menu **Snap:** Take pictures

**Record:** Record video **TELE:** Zoom in **WIDE:** Zoom out

**NEAR:** Turn the focus near **FAR:** Turn the focus far

**AF/ ENTER:** AF: Auto focus

**Enter:** Confirm the button after selecting the function

**B. W/C:** Black & white / Color **BRI-:** Bright Down **BRI+:** Bright UP **TEXT:**

Text mode ( Defaults to picture mode), more clearly in text status,more colorful in picture status.

**SHARP-:** Sharp down **SHARP+:** Sharp up



**FREEZE:** Freeze the picture    **NEGA:** Negative

**SPLIT:** Split screen, live on the left, freeze on the right.

**RESET:** Restore defaults    **MIRROR:** Horizontally reverse the picture

**ROTATE:** Rotate the image 180 degrees

## 8. Output Resolution

System resolution setting in the software or IR remote control resolution menu setting.

**XGA:** 1024\*768 (4:3)

**1080P:** 1920\*1080 (16:9)

**4K:** 3840\*2160 (16:9) (4K type)

## 9. FAQs

Questions	Measures
<b>No sound/ No image</b>	Check the power supply wire is connected or not; Check the power supply is turned on or not; Whether the monitor is powered on and working properly; Please check if the inputs and output interfaces are connected correctly; Whether to switch the source to the external computer, press the signal switch button on the panel to try; Restore factory settings;
<b>The key-press on the control panel dose not work</b>	Check whether the screen is in the image freeze state; Whether to switch the source to the external computer, press the panel of the presenter key to try;
<b>Remote control is unstable</b>	Operate the remote control close to the presenter; Check whether the battery of the remote control is installed; Replace the battery of the remote control; Try it in different positions;
<b>The image's not clear</b>	Please check whether the lens is dirty, if so please clean the lens with cotton cloth or put the object nearer to the lens; Perhaps the object is too near, if so please make sure the distance between the object and the lens is over 10mm; Perhaps the object is too bright or of bright surface, if so please modulate light outside;

# 10. Mouse operation software

Click the right mouse button to show the menu. Stop operations for 30 seconds. The menu is automatically hidden. Menu functions and notes are shown in the following figure.



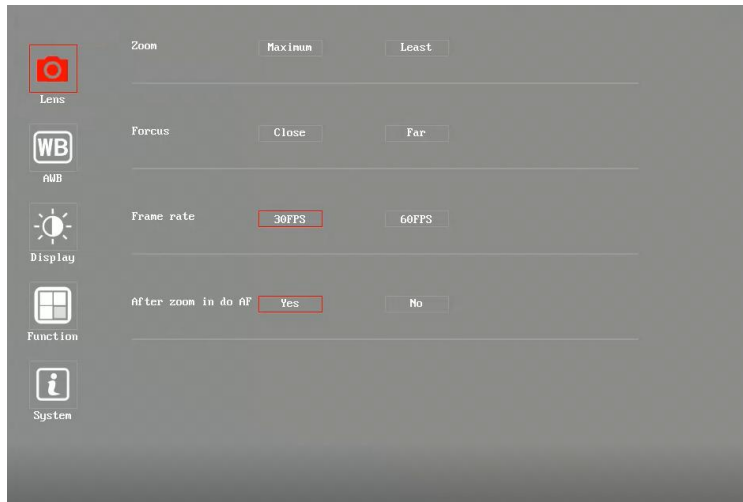
	Annotation		Auto Focus		Zoom In		Zoom Out
	Local Zoom		Title		Rotate		Freeze
	Split Screen		Picture in Picture		Picture or Text		
	Black & White		High Light		Cover		
	Photograph		Video		Photo		
	Video Playback		System Settings		Manual		



	Home Page		Photograph		Pencil		Eraser Tool
	Undo		Redo		CLS		
	Graphic Properties		Line Width				
	Color Attribute		Board Attribute				
	Real Time Image		System settings				

The Settings menu contains: **Lens / AWB / Display / Function / System**

**Lens:**



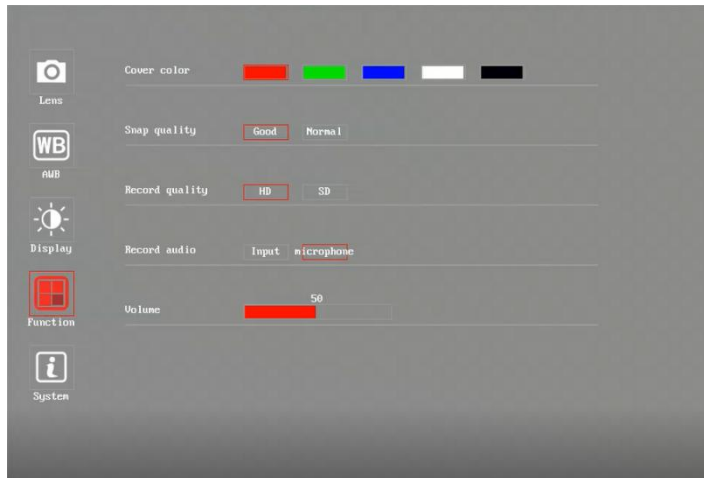
**AWB:** Adjust automatic white balance and manual white balance as required



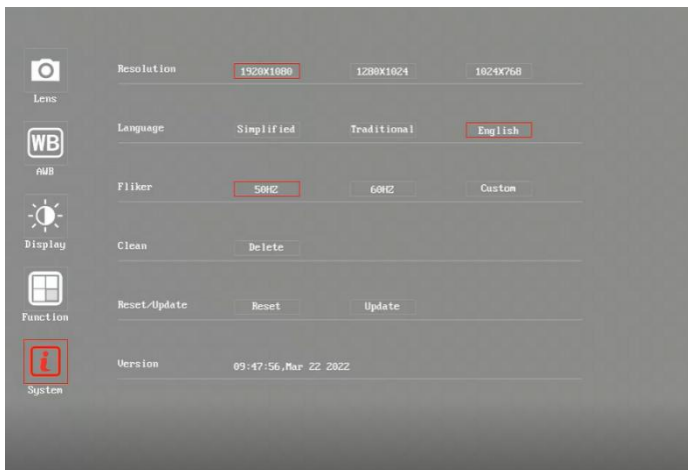
**Display:** Image parameter



**Function:**



**System:**





STOCK CODE  
**836453**



Returnstar Interactive Technology Group CO., LTD.  
6th Bldg. High-Tech Base. Fuzhou Fujian Prov. China  
0086-591-38202660  
0086-591-38203003  
www.IQBoard.net  
IQBoard@IQBoard.net